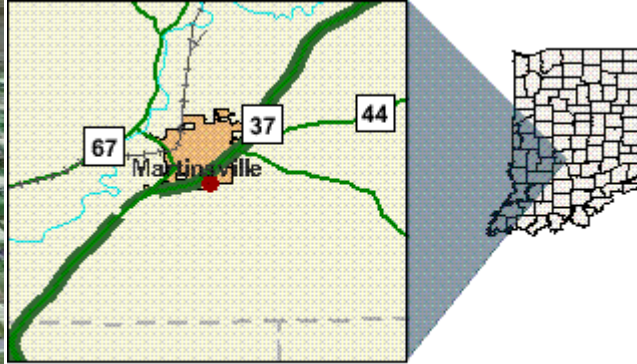
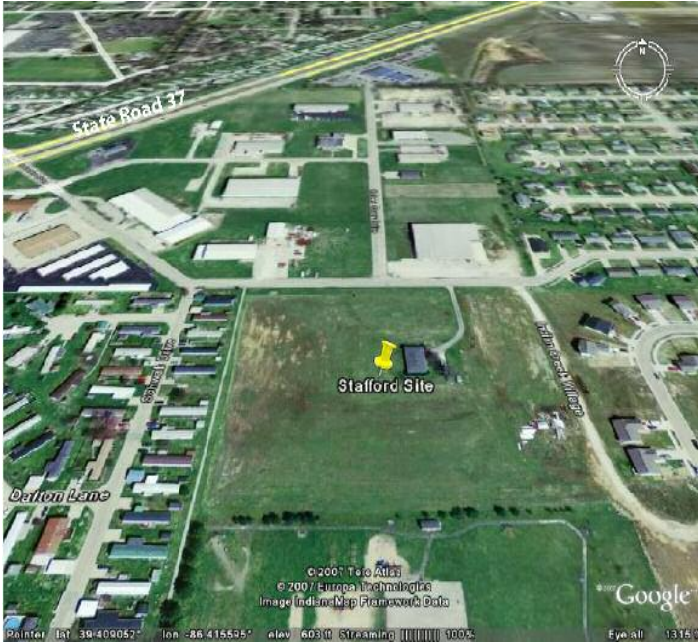




## Stafford Site

Industrial Drive & Robert Curry Drive Martinsville, IN 46151



### Location

<b>Street Address</b>	Industrial Drive & Robert Curry Drive
<b>City</b>	Martinsville
<b>County</b>	Morgan
<b>Township</b>	Washington
<b>State</b>	IN
<b>Zip Code</b>	46151
<b>Type</b>	Site Only

## Site Details

### Site

<b>Total Acres Available</b>	7.8
<b>Within city/town limits</b>	Yes
<b>Located in Industrial Park</b>	Yes
<b>Name of Industrial Park</b>	Martinsville Industrial Park

### Sale/Leasing

<b>Ownership</b>	Private
<b>For Sale</b>	Yes
<b>Sale Price</b>	\$55,000

### Jurisdiction

<b>Zoning/Planning Authority</b>	City of Martinsville
<b>Zoning Code/Description</b>	B-2
<b>Current Land Use</b>	Vacant

### Utility

<b>Electric Power Provider</b>	Duke Energy
<b>Electric Service at Property</b>	Yes
<b>Natural Gas Service Provider</b>	Vectren
<b>Natural Gas Service at Property</b>	Yes
<b>Natural Gas Main Size (Inches)</b>	2
<b>Natural Gas Main Pressure (PSI)</b>	60
<b>Water Provider</b>	City of Martinsville
<b>Water Service at Property</b>	Yes
<b>Sanitary Sewer Service Provider</b>	City of Martinsville
<b>Sanitary Sewer Service at Site</b>	Yes

### Property Tax

<b>Property Tax Jurisdiction</b>	City of Martinsville
<b>State Property Tax ID Number</b>	55021

## Contact Information

**Jeff Pipkin**

**Company**

Morgan County Economic Development Corp.

<b>Address</b>	4 E. Harrison St.
<b>City</b>	Mooresville
<b>State</b>	IN
<b>Zipcode</b>	46158
<b>Phone</b>	317-831-9544
<b>Fax</b>	317-831-9548
<b>Email</b>	<a href="mailto:jpipkin@morgancoed.com">jpipkin@morgancoed.com</a>
<b>Webpage</b>	<a href="http://www.morgancoed.com">www.morgancoed.com</a>
<b>Cell Phone</b>	317-997-1978

## John Taylor

<b>Company</b>	Morgan County Economic Development Corporation
<b>Address</b>	4 W. Harrison Street
<b>City</b>	Mooresville
<b>State</b>	IN
<b>Zipcode</b>	46158
<b>Phone</b>	317-831-9544
<b>Fax</b>	317-831-9548
<b>Email</b>	<a href="mailto:jtaylor@morgancoed.com">jtaylor@morgancoed.com</a>
<b>Webpage</b>	<a href="http://www.morgancoed.com">www.morgancoed.com</a>

---

Indiana Economic Development Corporation

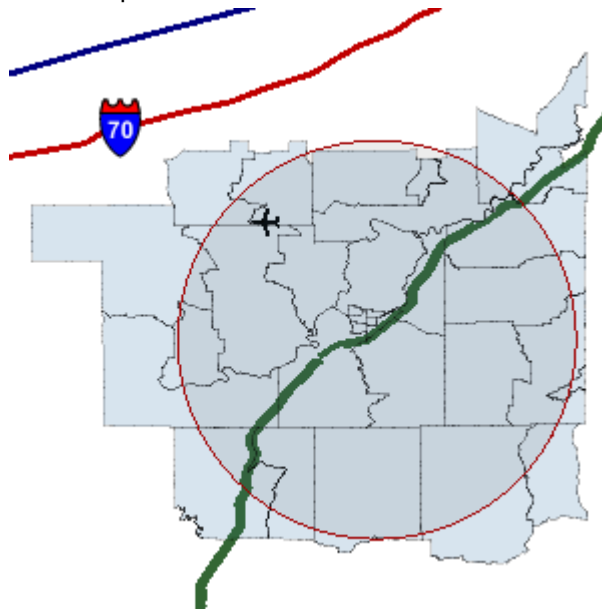
One North Capitol, Suite 700 • Indianapolis, Indiana 46204 • Tel 317.232.8800 • 800.463.8081 • Fax 317.232.4146



# Stafford Site

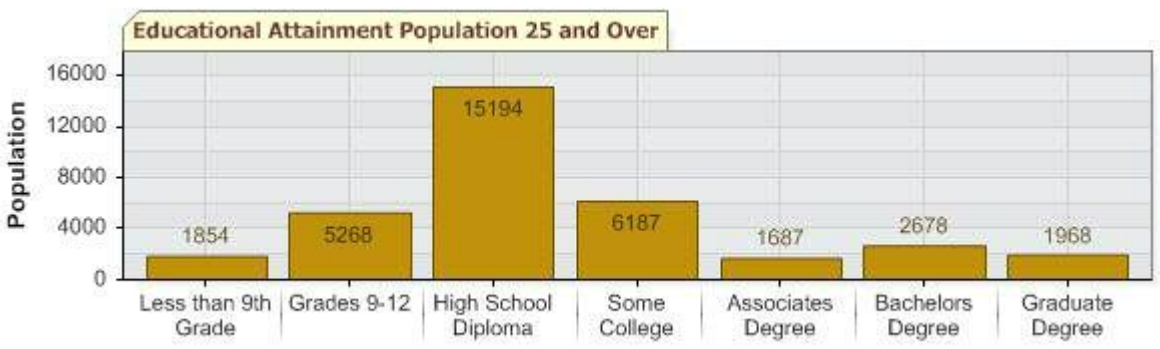
Industrial Drive & Robert Curry Drive Martinsville, IN 46151

## 10 Mile Demographic Radius Report



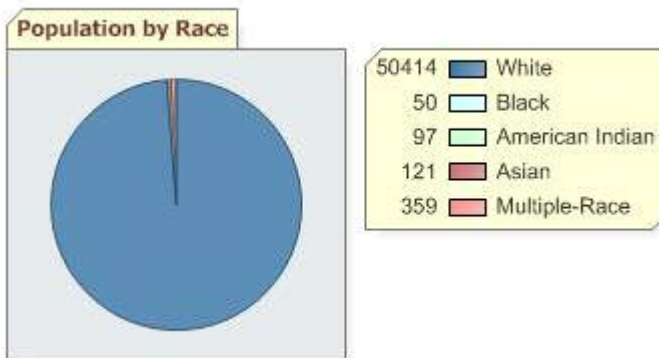
Population		
	Number	%
<b>Total Estimated Population</b>	51,146	100%
<b>Population in the Labor Force</b>	27,447	53.7%
<b>Population by working age 20-64</b>	31,506	61.6%

Educational Attainment		
	Number	%
<b>Total Adult Population (25 +)</b>	34,836	100%
<b>Less than Grade 9</b>	1,854	5.3%
<b>Grades 9-12, no diploma</b>	5,268	15.1%
<b>High School Graduate</b>	15,194	43.6%
<b>Some College, No Degree</b>	6,187	17.8%
<b>Associates Degree</b>	1,687	4.8%
<b>Bachelors Degree</b>	2,678	7.7%
<b>Graduate Degree</b>	1,968	5.6%



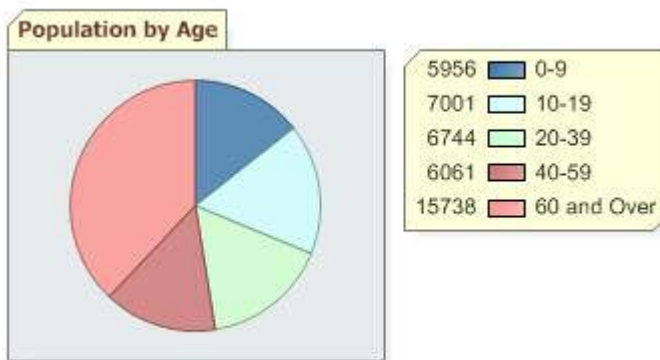
## Population by Race

	Number	%
<b>Total Population (all ages)</b>	51,146	100%
<b>White</b>	50,414	98.6%
<b>Black</b>	50	0.1%
<b>American Indian</b>	97	0.2%
<b>Asian</b>	121	0.2%
<b>Multiple-Race</b>	359	0.7%
<b>Ethnicity:</b>		
<b>Hispanic</b>	304	0.6%



## Population by Age

	Number	%
<b>Total Population</b>	51,146	100%
<b>0 to 9</b>	5,956	11.6%
<b>10 to 19</b>	7,001	13.7%
<b>20 to 29</b>	6,744	13.2%
<b>30 to 39</b>	6,061	11.9%
<b>40 to 59</b>	15,738	30.8%
<b>60+</b>	9,646	18.9%

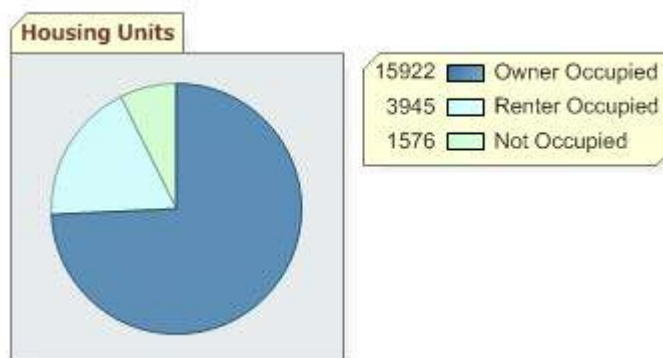


## Household Income

	Number	%
<b>Total Households</b>	19,867	100%
<b>Less than \$30,000</b>	5,052	25.4%
<b>\$30,000 to \$49,000</b>	3,842	19.3%
<b>\$50,000 to \$100,000</b>	7,710	38.8%
<b>\$100,000 or more</b>	3,263	16.4%

## Housing

	Number	%
<b>Total Housing Units</b>	21,443	100%
<b>Occupied by Owner</b>	15,922	74.3%
<b>Renter Occupied</b>	3,945	18.4%



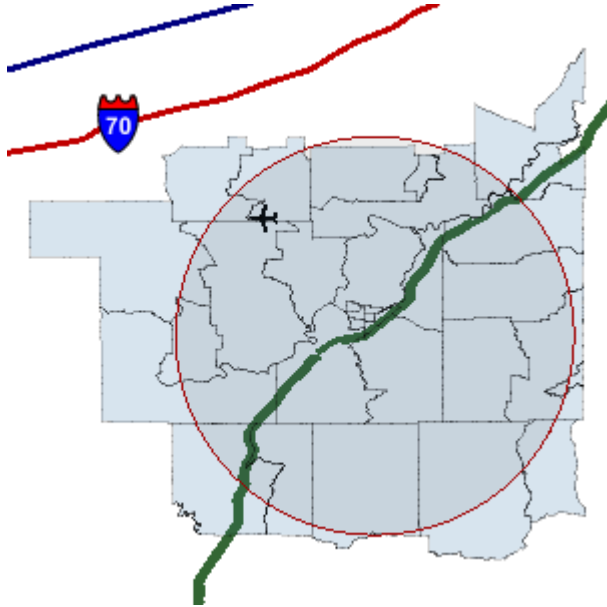
Source: Applied Geographic Solutions



# Stafford Site

Industrial Drive & Robert Curry Drive Martinsville, IN 46151

## 10 Mile Workforce Radius Report



### Business Establishments and Labor Supply

	Number
<b>Business Establishments</b>	1,239
<b>Jobs</b>	11,055

### Establishments by Range of Employees

	Number	% Dist.
<b>1 to 20</b>	1,139	91.9%
<b>20 to 50</b>	69	5.6%
<b>50 to 99</b>	22	1.8%
<b>100 to 249</b>	5	0.4%
<b>250 to 499</b>	2	0.2%
<b>500+</b>	2	0.2%

### Occupations

	Number	% Dist.
<b>Executive, Managers, and Administrators</b>	1,086	9.8%
<b>Professional Specialty Occupations</b>	2,092	18.9%
<b>Sales Professionals</b>	229	2.1%
<b>Technologies and Technicians</b>	317	2.9%
<b>Sales Workers and Clerks</b>	1,034	9.4%
<b>Administrative Support Workers</b>	2,041	18.5%
<b>Technical, Sales, and Administrative: Field Occupations</b>	33	0.3%
<b>Private Household Service</b>	1	0.0%
<b>Protective Services</b>	152	1.4%
<b>Other Services: Site Based</b>	1,533	13.9%
<b>Other Services: Field Based</b>	54	0.5%
<b>Farming, Forestry, and Fishing</b>	248	2.2%

Precision, Craft, and Repair: Site Based	978	8.8%
Construction, Repair, and Mining: Field Based	345	3.1%
Machine Operators, Assemblers, and Inspectors	289	2.6%
Transportation and Materials Moving Workers	295	2.7%
Handlers, Helpers and Laborers	285	2.6%

### Establishments and Employment by Industry

	Establishments % Dist.		Jobs % Dist.	
<b>Total</b>	1,239	100%	11,055	100%
<b>Agriculture, Forestry and Fishing</b>	11	0.9%	45	0.4%
<b>Agricultural Services</b>	26	2.1%	102	0.9%
<b>Coal and Ore Mining</b>	2	0.2%	17	0.2%
<b>Oil and Gas</b>	0	0	0	0
<b>General Construction</b>	34	2.7%	136	1.2%
<b>Heavy Construction</b>	92	7.4%	544	4.9%
<b>Food Manufacturing</b>	2	0.2%	4	0.0%
<b>Tobacco Manufacturing</b>	0	0	0	0
<b>Textile Mills</b>	1	0.1%	150	1.4%
<b>Apparel and Textile Manufacturing</b>	0	0	0	0
<b>Lumber and Wood Production</b>	6	0.5%	50	0.5%
<b>Furniture Manufacturing</b>	0	0	0	0
<b>Paper Manufacturing</b>	1	0.1%	19	0.2%
<b>Printing and Publishing</b>	7	0.6%	51	0.5%

### Establishments and Employment by Industry

	Establishments % Dist.		Jobs % Dist.	
<b>Chemicals</b>	0	0	0	0
<b>Petroleum Refining</b>	1	0.1%	7	0.1%
<b>Rubber and Plastics</b>	3	0.2%	46	0.4%
<b>Leather Manufacturing</b>	0	0	0	0
<b>Stone, Glass, and Concrete</b>	0	0	0	0
<b>Metals Fabrication</b>	6	0.5%	67	0.6%
<b>Machinery and Equipment Manufacturing</b>	22	1.8%	458	4.1%
<b>Transportation</b>	30	2.4%	197	1.8%
<b>Travel Services</b>	0	0	0	0
<b>Transport Services</b>	1	0.1%	2	0.0%
<b>Communications</b>	4	0.3%	23	0.2%
<b>Utilities</b>	6	0.5%	97	0.9%
<b>Durables Wholesale</b>	38	3.1%	883	8.0%
<b>Non Durables Wholesale</b>	18	1.5%	225	2.0%
<b>Building Materials, Hardware and Garden</b>	16	1.3%	80	0.7%
<b>General Merchandise Stores</b>	5	0.4%	351	3.2%
<b>Food Markets</b>	8	0.6%	212	1.9%
<b>Convenience Stores</b>	10	0.8%	75	0.7%
<b>Other Food Stores</b>	1	0.1%	10	0.1%
<b>Auto Dealers and Gas Stations</b>	49	4.0%	368	3.3%
<b>Clothing Stores</b>	6	0.5%	20	0.2%
<b>Furniture Stores</b>	6	0.5%	46	0.4%
<b>Home Furnishings</b>	9	0.7%	36	0.3%
<b>Electronics and Computer Stores</b>	9	0.7%	24	0.2%
<b>Music Stores</b>	1	0.1%	2	0.0%
<b>Restaurants</b>	33	2.7%	502	4.5%
<b>Other Food Service</b>	9	0.7%	94	0.9%
<b>Bars</b>	5	0.4%	29	0.3%
<b>Drug Stores</b>	2	0.2%	30	0.3%
<b>Liquor Stores</b>	4	0.3%	19	0.2%
<b>Specialty Stores</b>	63	5.1%	192	1.7%
<b>Catalog and Direct Sales</b>	2	0.2%	25	0.2%

<b>Banks and Financial Institutions</b>	26	2.1%	174	1.6%
<b>Insurance Carriers</b>	5	0.4%	9	0.1%
<b>Insurance Agents and Brokers</b>	31	2.5%	86	0.8%
<b>Real Estate</b>	49	4.0%	180	1.6%

### Establishments and Employment by Industry

	Establishments	% Dist.	Jobs	% Dist.
<b>Hotels and Lodging</b>	14	1.1%	217	2.0%
<b>Dry Cleaning and Laundry</b>	9	0.7%	30	0.3%
<b>Beauty and Barber Shops</b>	29	2.3%	83	0.8%
<b>Other Personal Service</b>	18	1.5%	71	0.6%
<b>Advertising</b>	2	0.2%	2	0.0%
<b>Computer Services</b>	9	0.7%	18	0.2%
<b>Other Business Services</b>	33	2.7%	84	0.8%
<b>Auto Repair/Services</b>	58	4.7%	182	1.6%
<b>Miscellaneous Repair Services</b>	18	1.5%	50	0.5%
<b>Motion Pictures</b>	6	0.5%	29	0.3%
<b>Entertainment and Recreation Services</b>	19	1.5%	35	0.3%
<b>Health and Medical Services</b>	63	5.1%	309	2.8%
<b>Hospitals</b>	14	1.1%	786	7.1%
<b>Legal Services</b>	23	1.9%	60	0.5%
<b>Primary and Secondary Education</b>	17	1.4%	2,025	18.3%
<b>Colleges and Universities</b>	0	0	0	0
<b>Social Services</b>	20	1.6%	240	2.2%
<b>Child Care Services</b>	11	0.9%	97	0.9%
<b>Museums and Zoos</b>	0	0	0	0
<b>Membership Organizations</b>	87	7.0%	279	2.5%
<b>Professional Services</b>	28	2.3%	105	0.9%
<b>Government</b>	83	6.7%	574	5.2%

Source: Applied Geographic Solutions

Indiana Economic Development Corporation

One North Capitol, Suite 700 • Indianapolis, Indiana 46204 • Tel 317.232.8800 • 800.463.8081 • Fax 317.232.4146